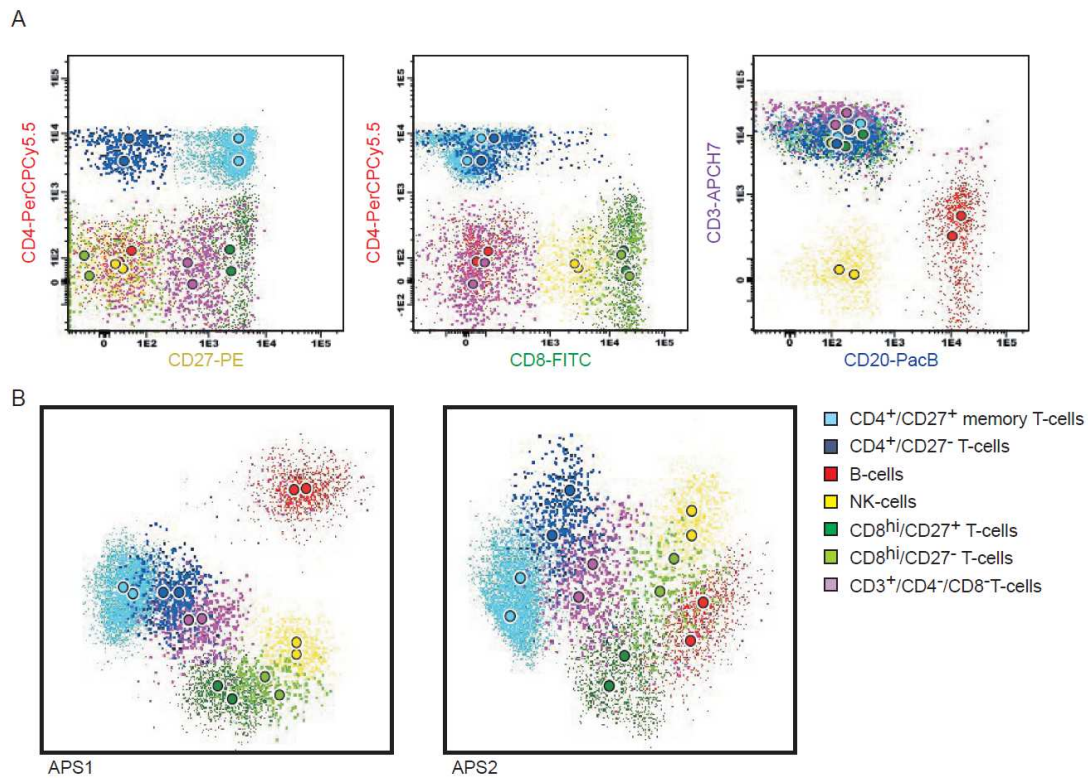


SUPPLEMENTARY FIGURES



Supplementary Figure 1 – **Conventional bivariate dot-plot (panel A) and APS view graphs (panel B) of merged data files acquired in two different platforms (Cyan ADP and LSRII), where all peripheral blood (PB) cell subsets analyzed are depicted in different colors.** Color coding is as follows: B-cells, red; CD4⁺/CD27⁺ memory T-cells, dark red light blue; CD4⁺/CD27⁻ T-cells, dark blue; CD8^{hi}/CD27⁺ memory T-cells, dark green; CD8^{hi}/CD27⁻ T-cells, light green; CD3⁺/CD4⁻&CD8⁻ T-cells, violet; NK-cells, yellow and monocytes, orange. Each population is represented in colored circles (median values) and dots obtained at each individual center for each population colored as described above.